



**Bobcat**<sup>®</sup>

*One Tough Animal*

SMALL ARTICULATED LOADERS

**L23, L28**

🌐 Europe



# INTRODUCTION

# ONE TOUGH ANIMAL



### BOBCAT'S HISTORY

In 1958, Melroe Manufacturing Company introduced a compact front-end loader that evolved quickly into the M400, the world's first true skid steer loader. The company soon adopted what became the world-famous 'Bobcat' brand – and its success paved the way for the global compact equipment industry we know today.

### NEVER-ENDING INNOVATION

New technologies and machines are rigorously tested in our innovation facilities to take on the toughest jobs.



### BOBCAT TODAY

Bobcat loaders reshaped the agriculture and construction industries with a solution that is compact, maneuverable, productive and tough. Today, with the largest portfolio of loaders on the market, we continue the spirit of this pioneering product.



### OUR MISSION

We empower operators to accomplish more, while working in the toughest conditions and tightest situations. When our customers have the will, we provide the way.

# COMPACT AND VERSATILE

► **MADE TO GO WHERE THE WORK IS**

Small Articulated Loaders pack a serious punch in a compact, lightweight package that's wonderfully easy to operate, making them a powerful and handy multi-purpose tool for a wide range of applications.



Front and rear work lights

Unmatched 360° visibility

Open or remove windows completely to adapt to the season

Bobcat Standard hydraulic couplers and 14 pin electrical connector

Familiar and intuitive steering and joystick controls

Extended reach with a telescopic boom (L28 only)

Easy cab access

Hybrid Bob-Tach allows the use of small and standard attachments

Selection of tires to match your needs



► **HEAVY LIFTER WITH REACH**

Impressive stability, tipping load and reach, make it easy to place loads over trenches and sidewalks.



► **TREAD LIGHTLY, GO ANYWHERE**

Low ground disturbance and a dedicated turf mode help you go easy on fragile surfaces.



► **START WORKING INSTANTLY**

Intuitive operation and open construction make it easy to jump in or get work done.



► **COMPACT AND AGILE**

The machine's small size and tight turning radius help you work in hard-to-reach areas.



# PERFORMANCE

## ▶ IMPROVED LIFT CAPACITY AND REACH

Built with great performance in mind, Bobcat Small Articulated Loaders are exceptionally stable and feature a tipping load of over 1.6 t. Their extended reach makes it easy to reach a pallet in the second row.



## GO WHERE WORK TAKES YOU



## ▶ EASY TRANSPORT

Even with its robust construction, the machine is light enough for hassle-free transport on a trailer behind a regular car. So, you stay mobile and grow your business.

# STEP INSIDE



## ► BUILT AROUND THE WAY YOU WORK

With unmatched 360° visibility, it's easy to keep visual contact with the entire job site. Spacious operator's area provides a lot of leg room and is easy to get in and out, while the machine's construction ensures that the operator is always facing the attachment.



## ► 2-PEDAL DRIVING



The control of your loader is as easy as it gets. One pedal for forward direction and one for reverse.

## ► ADAPTABLE CAB



Open your windows or remove them completely. Both are quick and easy and let you adapt to the season.

## ► CAR-LIKE CONTROLS



Feel at home with familiar steering wheel and joystick controls. New and experienced operators, welcome aboard!

# BUILT TO LAST

## ► LEGACY OF INNOVATION

You'll always find quality materials and sturdy design in your Bobcat machine. This is as true with the time-proven world's most popular skid steer loader as it is with our new small articulated loaders. You can stake your reputation on the durability of our new equipment, built with the same reliable components as other Bobcat machines.

## ► MADE TO KEEP YOU IN THE FIELD

We're continually improving the ease of servicing with features such as battery disconnect. Accessing servicing points and battery is easy, and minimal greasing points minimize servicing time. If you do need to visit the shop, one service point for both machine and engine will take you back to the field in no time.



## ► MACHINE IQ

BOBCAT® Machine IQ Wireless Communications enhances the support for your Bobcat machine.

- Durable built-in monitoring electronics
- Data is available to our machine monitoring specialist
- Maintenance is optimized for your business
- Data-driven services maximize uptime

# THERE'S NO TIME FOR DOWNTIME. STAND UP TO THE HARSHTEST CONDITIONS. DAY AFTER DAY.



## ► STANDARD WARRANTY

Bobcat Company develops every machine to the highest standards of quality and durability. That's why our standard warranty provides 24 months or 2 000 operating hours (whichever occurs first) of coverage.



## ► PROTECTION PLUS EXTENDED WARRANTY

Enjoy total peace of mind with Protection Plus® extended warranty. Providing the same level of protection as the standard warranty, Protection Plus also reflects different customer needs and expectations by offering a choice of durations and annual operating hours. According to your needs, you can benefit from the coverage for up to 5 years or 6 000 engine hours. And Protection Plus is transferrable – so it will likely increase your machine's resale value.



## ► BOBCARE

A long-running machine starts with proper planned maintenance. And it helps protect against repair costs and unplanned failures when you're counting on your machine to work.

- Avoid risk by preventing major repairs and complete failures.
- Accomplish more by reducing downtime and increasing your productivity and profitability.

## L23

### ► COMPACT ALL-ROUNDER

Being slightly lighter and compact, the L23 is a great fit for everyday jobs.

Weight: 1 719 kg  
Lift capacity: 1 116 kg  
Width over bucket: 1 117 mm  
Hinge pin at maximum height: 2 169 mm



# CHOOSE YOUR ANIMAL

## L28

### ► HEAVY LIFTER

Equipped with a telescopic boom for extended reach and higher lift capacity, the L28 is a versatile machine suitable for many applications.

Weight: 1 903 kg  
Lift capacity: 1 085 kg  
Width over bucket: 1 270 mm  
Hinge pin at maximum height: 3 107 mm



# STANDARD EQUIPMENT & OPTIONS

	L23	L28
<b>PERFORMANCE</b>		
Auxiliary hydraulics	✓	✓
Counterweights	•	•
Fixed lift arm	✓	✓
BICS system (Interlock)	✓	✓
Hydraulic self level (bucket positioning)	✓	✓
Lift kit	•	•
Lift arm support	✓	✓
Power Bob-Tach™ attachment system	•	•
<b>CAB &amp; CANOPY</b>		
Adjustable suspension seat	•	•
Cab enclosure with heater	•	•
Canopy	✓	✓
Cup holder	✓	✓
Heated seat	•	•
Radio	•	•
Rear window	•	•
Static vinyl seat	✓	✓
<b>TIRES</b>		
Tires 23 × 10.50-12 – Turf	•	✓
Tires 23 × 5.7-12 – Standard Duty	•	-
Tires 23 × 8.50-12 – Tractor	•	•
Tires 23 × 8.50-12 – Turf	✓	•
Tires 26 × 12.00-12 – Tractor	-	•
Tires 26 × 12.00-12 – Turf	-	•
<b>LIGHTS &amp; BEACON</b>		
Front and rear work lights	✓	✓
Rotating flashing beacon	•	•
Road lights	•	•
Turn signals	•	•
<b>MISCELLANEOUS</b>		
Automatic traction modes – High and Turf Safe	✓	✓
Backup alarm	✓	✓
Fender kit	•	•
Horn	✓	✓
Rear guard	•	•
Sediment bowl	•	•
Spark arrestor muffler	✓	✓
Traction assist	•	•

• = option   ✓ = standard

## PERSONALIZE YOUR MACHINE

Sometimes, we all want to add a specific functionality or a personal touch to the machine. Choose from a list of comprehensive options and customize your small articulated loader to your heart's content!



Auxiliary hydraulics



Counterweights



Power Bob-Tach™



Rear guard



Tires 23 × 10.50-12 – Turf





# MULTI-TOOL CARRIER

## ► TRULY MULTI-PURPOSE

Bobcat attachments are key to the versatility of your machine. To enable operators to do more, Small Articulated Loaders are equipped with Hybrid Bob-Tach. This makes them compatible with both small and standard attachments.

- Angle broom
- Auger
- Boring unit
- Breaker
- Bucket, dirt
- Bucket (GP), general purpose
- Bucket, utility
- Dumping hopper
- Grapple, farm – utility on bucket
- Grapple, industrial
- Grapple, root
- Landplane
- Pallet forks
- Snow blade
- Snow blower
- Snow V-blade
- Soil conditioner
- Stump grinder
- Sweeper
- Tiller
- Trencher
- Utility fork



Angle broom



Snow blower



Pallet forks



Root grapple



# SPECIFICATIONS

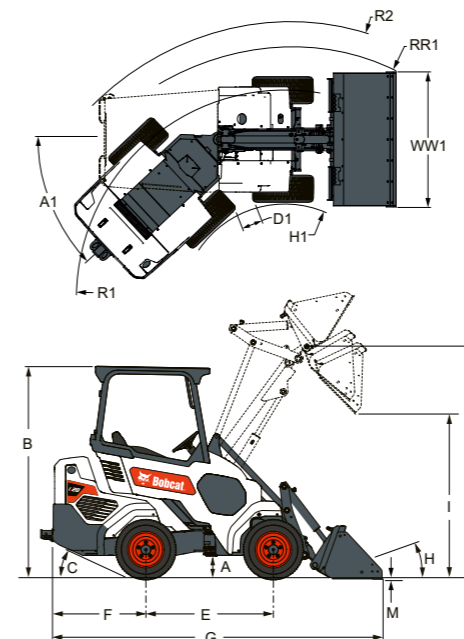
SPECIFICATIONS		
	L23	L28
<b>PERFORMANCE</b>		
Tipping load – straight – bucket	1 265 kg	1 392 kg
Tipping load – straight – forks	872 kg	945 kg
Tipping load – straight – extended – bucket	–	805 kg
Tipping load – straight – extended – forks	–	601 kg
Tipping load – articulated – bucket	1 051 kg	1 109 kg
Tipping load – articulated – forks	724 kg	759 kg
Tipping load – articulated – extended – bucket	–	645 kg
Tipping load – articulated – extended – forks	–	479 kg
Rated operating capacity – straight – bucket	633 kg	696 kg
Rated operating capacity – straight – forks	436 kg	473 kg
Rated operating capacity – straight – extended – bucket	–	403 kg
Rated operating capacity – straight – extended – forks	–	301 kg
Rated operating capacity – articulated – bucket	525 kg	554 kg
Rated operating capacity – articulated – forks	362 kg	380 kg
Rated operating capacity – articulated – extended – bucket	–	323 kg
Rated operating capacity – articulated – extended – forks	–	239 kg
Lift capacity	1 116 kg	1 085 kg
Breakout force – boom	1 047 kg	1 141 kg
<b>ENGINE</b>		
Make / Model	Kubota / D1305-E4B-BC-1	
Fuel	Diesel	
Cooling	53% Propylene glycol / 47% water mixture	
Power at 2 600 RPM (ISO 14396)	18.2 kW	
Torque at 1 700 RPM (ISO 14396)	81.3 NM	
Number of cylinders	3 in-line	
Displacement	1.3 cm <sup>3</sup>	
<b>WEIGHT</b>		
Operating weight	1 719 kg	1 903 kg
Shipping weight	1 540 kg	1 731 kg
<b>HYDRAULIC SYSTEM</b>		
System relief	20 MPa	
Implement pump	Engine driven gear type	
Implement pump capacity	45.8 l/min	
Main filter	Replaceable 16(c) ≥ 75 ISO 4572, spin on with o-ring, 0.34 MPa [50 PSI] bypass	
Tank breather filter	Non-replaceable 10 micron, thread-on cap	
Control valve	Manually operated series type (lift & tilt functions) with float detent on lift. E/H operated parallel type (aux & telescopic functions).	
Hydraulic fluid	Premium grade, anti wear, multi viscosity ISO VG46, petroleum based	
Rollback time	1.2 s	1.8 s

Certain specification(s) are based on engineering calculations and are not actual measurements. Specification(s) are provided for comparison purposes only and are subject to change without notice. Specification(s) for your individual Bobcat equipment will vary based on normal variations in design, manufacturing, operating conditions, and other factors. Pictures of Bobcat units may show other than standard equipment.

# SPECIFICATIONS

SPECIFICATIONS		
	L23	L28
<b>FLUID CAPACITIES</b>		
Cooling system	5.7 l	
Fuel tank	36.2 l	
Engine oil	3.8 l	
Hydraulic and hydrostatic system	18.5 l	20.8 l
<b>DRIVE SYSTEM</b>		
Transmission	4 wheel drive with automatic drive modes, optional traction assist function	
<b>ELECTRICAL</b>		
Alternator	90 Amp ventilated	90 A open frame with internal regulator
Battery	12 Volt BCI group 26; 540 Amps cold cranking capacity at 0 F (-18 C); 80 minute reserve capacity	
Starter	12 V gear type 2.0 kW [2.68 HP]	
Ignition switch	Activates starter and instrumentation	
<b>CYCLE TIMES</b>		
Raising time	2.4 s	2.6 s
Lowering time	2 s	2.2 s
Dump time	1.7 s	1.4 s

## DIMENSIONS



DIMENSIONS		
	L23	L28
<b>A</b> Cab Height	1 983.7 mm	
<b>B</b> Ground Clearance	196 mm	
<b>C</b> Wheelbase	1 200 mm	
<b>D</b> Overall Length with Bucket	1 099 mm	
<b>F</b> Dig Depth	19.5 mm	
<b>G</b> Maximum Dump Height	1 654.8 mm	2 136.4 mm
<b>H</b> Load Over Height	30°	
<b>I</b> Hinge Pin at Maximum Height	2 169.2 mm	1 071.1 mm
<b>J</b> Departure Angle	23°	
<b>K</b> Turning Radius Over Bucket	2 339.2 mm	2 407.7 mm
<b>L</b> Turning Radius Inside Tire	974.4 mm	931.5 mm
<b>M</b> Width Over Bucket	1 117.6 mm	1 270 mm
<b>O</b> Machine Width	1 180.7 mm	1 180.7 mm
<b>P</b> Articulation Angle	43°	
<b>Q</b> Dump Angle at Maximum Height	40°	

# FINANCING OPTIONS

## 24, 36, OR 48 MONTH FINANCING\*

Take advantage of 24, 36 or 48 month financing programs starting from **0% interest** and improve your cashflow. Ask your dealer for the financing offers available.

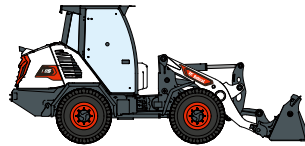
**100 MACHINES / 150 ATTACHMENT FAMILIES / 1 TOUGH ANIMAL**



**SKID STEER  
LOADERS**



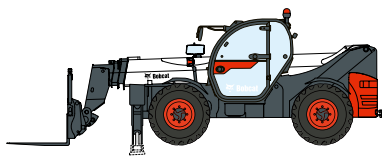
**COMPACT TRACK  
LOADERS**



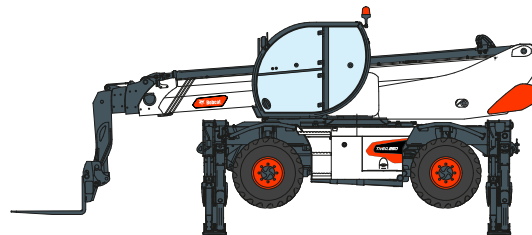
**COMPACT WHEEL  
LOADERS**



**SMALL ARTICULATED  
LOADERS**



**TELEHANDLERS**



**ROTARY TELESCOPIC  
HANDLERS**



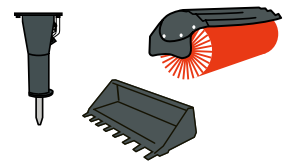
**LIGHT COMPACTION  
EQUIPMENT**



**MINI TRACK  
LOADER**



**COMPACT EXCAVATORS**



**ATTACHMENTS**



[www.bobcat.com](http://www.bobcat.com)

**Bobcat is a Doosan Company.** Doosan is a global leader in construction equipment, power & water solutions, engines, and engineering proudly serving customers and communities for more than a century. | Bobcat and the Bobcat logo are registered trademarks of Bobcat Company in the United States and various other countries. ©2021 Bobcat Company. All Rights Reserved.

©2021 BOBCAT B4501950-EN (06-21)



**Bobcat**®

\*Financing options may vary by country and dealer. Always ask your dealer about currently available financing options. Terms and conditions may apply.

Doosan Bobcat EMEA, U Kodelky 1810, 263 12 Dobříš, Czech Republic



# GET **A QUOTE**

Simply click **the button** or scan **the QR code** below to access our quote request form.

We will contact you as soon as possible.  
Thank you!



**REQUEST QUOTE** >