

LIGHT COMPACTION EQUIPMENT

PRODUCT RANGE



One Tough Animal

INTRODUCTION

ONE TOUGH ANIMAL



BOBCAT'S HISTORY

In 1958, Melroe Manufacturing Company introduced a compact front-end loader that evolved quickly into the M400, the world's first true skid steer loader. The company soon adopted what became the world-famous 'Bobcat' brand – and its success paved the way for the global compact equipment industry we know today.

SOLUTIONS FOR EVERY JOB SITE

Bobcat continues to bring new products and technologies to the market, stepping boldly into new categories, and driving customer-centric innovations.



SMALL BUT MIGHTY

No construction site is complete without a soil and asphalt compactor. We have expanded our extensive portfolio with highly versatile compaction machines – ranging from 29 kg rammers up to tandem rollers of 2.6 tons.



OUR MISSION

We empower operators to accomplish more, while working in the toughest conditions and tightest situations. When our customers have the will, we provide the way.

ULTIMATE COMPACTION SUITE

► THE RIGHT FIT FOR YOUR JOB SITE

These high-productivity, robust and cleverly designed machines make short work of any compaction needs on all terrains. Thanks to intuitive operation, easy maintenance and a host of safety features, these machines are accessible for first-time users.

HYDROSTATIC PLATES
P.13



WALK-BEHIND ROLLERS
P.14



TRENCH ROLLERS
P.15

REVERSIBLE PLATES
P.10



FORWARD PLATES
P.9



RAMMERS
P.6



► ACCOMPLISH MORE
Get more done with less effort, while keeping fuel consumption low, thanks to a set of productivity features.



► BUILT TOUGH
With a robust frame, you don't have to worry about damaging the machine, no matter where it is used.



► ALL-SURFACE OPERATION
With dual amplitude settings and triple-shaft technology, you can take on any compaction task with confidence.



► ACCESSIBLE FOR ANYONE
Simple controls mean that machines can be safely and efficiently operated even by beginners with basic training.

RAMMERS

► PURE COMPACTION POWER

Thanks to their robust and reliable engines, our rammers deliver high compaction power, while the clever engineering design keeps their center of gravity low for optimal balance.



SPECIFICATIONS						
	R30	R60	R60P	R68	R68P	R70D
DIMENSIONS & WEIGHTS						
Machine weight	29 kg	62 kg		68 kg		83 kg
Foot length	260 mm			340 mm		
Foot width	130 mm			280 mm		
Handle length	660 mm	710 mm				770 mm
Machine height	860 mm	1 120 mm	1 020 mm			
Handle width	300 mm	355 mm				410 mm
ENGINE						
Engine	Honda GX 35	Honda GX 100	Honda GXR 120	Honda GX 100	Honda GXR 120	Yanmar L48
Fuel	Petrol					Diesel
Engine output at RPM	0.92 kW (1.23 HP) at 5 500	2.2 kW (3 HP) at 4 300	2.7 kW (3.7 HP) at 4 300	2.2 kW (3 HP) at 4 300	2.7 kW (3.7 HP) at 4 300	3.2 kW (4.3 HP) at 3 250
Fuel consumption	0.5 l/h	0.9 l/h	1 l/h	0.9 l/h	1 l/h	0.9 l/h
COMPACTION FORCES						
Percussion rate	13.3 Hz	11.3 Hz				12.2 Hz
Stroke height	45 mm	65 mm				60 mm
Centrifugal force	2 kN	11.5 kN		13 kN		16 kN
Surface capacity	58 m ² /h / 94 m ² /h	227 m ² /h				210 m ² /h
Max. compaction performance	30 cm	45 cm		50 cm		60 cm
MISCELLANEOUS						
Fuel tank capacity	0.63 l	3.2 l				2.5 l
Travel speed	12 m/min	13.5 m/min				12 m/min
Optional foot sizes width	80 mm	165–200–230–330–400 mm				230–330 mm

Specifications can change without notice. Specifications for your Bobcat equipment may vary based on variations in design and working conditions.



FORWARD PLATES

► AGILE ALL-ROUNDER

Their small size and manoeuvrability make them especially suitable for tight-fitting areas. Thanks to intuitive operation and easy maintenance, these machines are also ideal for first-time users.

Designed for maximum uptime thanks to large side covers, fully protecting V belts that supply the compaction power.

High-performance vibratory system features extended service intervals and reduced cost of ownership.



Low HAV handles enhance operator's comfort by reducing unwanted vibrations. Levels are in compliance with strictest regulations, which eliminates additional paperwork.

Added durability on even the most demanding job sites, with optional transport wheels with aluminum rims.

Forward plates are equipped with high-resistant base plates that are thicker in the rear, where most wear occurs. So, machines that operate under typical working conditions require no base plate service during their lifetime.

SPECIFICATIONS

	FP10.33	FP12.40	FP15.40	FP15.50	FP20.50	FP20.50D
DIMENSIONS & WEIGHTS						
Machine weight (base configuration)	54 kg	69 kg	80 kg	84 kg	88 kg	106 kg
Machine weight (incl. optional sprinkler & wheels)	54 kg	76 kg	89 kg	93 kg	97 kg	106 kg
Machine length (base configuration)	655 mm	621 mm	700 mm			
Machine length (incl. optional water tank & wheels)	635 mm	770 mm	1 075 mm			
Base plate length	497 mm	540 mm	559 mm			
Ground contact length	341 mm	371 mm	352 mm			
Machine height	453 mm	514 mm	667 mm		674 mm	
Handle height (transport)	1 100 mm		736 mm			
Machine width	330 mm	400 mm		500 mm		
ENGINE						
Engine	Honda GX 120			Honda GX	Honda GX 160	Hatz 1B20
Fuel	Petrol				Diesel	
Engine output at RPM	2.9 kW at 3 600				3.7 kW at 3 250	3.2 kW at 3 250
COMPACTION FORCES						
Max. vibration frequency	100 Hz	98 Hz	100 Hz		90 Hz	
Max. centrifugal force	10.5 kN	12 kN	15 kN		20 kN	
Surface capacity	436 m ² /h	480 m ² /h	648 m ² /h	720 m ² /h	930 m ² /h	990 m ² /h
Spec. surface pressure	9.3 N/cm ²	8.1 N/cm ²	10.7 N/cm ²	8.5 N/cm ²	10.2 N/cm ²	
MISCELLANEOUS						
Hand-arm vibration on handle	11 m/s ²	3.0 m/s ²	< 2.5 m/s ²		3.1 m/s ²	<2.5 m/s ²
Speed	0-22 m/min	0-20 m/min	0-27 m/min	0-24 m/min	0-31 m/min	0-33 m/min
Gradeability	30%			20°		
Max. incline to all sides	30%			20°		

Specifications can change without notice. Specifications for your Bobcat equipment may vary based on variations in design and working conditions.

REVERSIBLE PLATES

► RELIABLE PERFORMER

Equipped with hydrostatic steering control, reversible plates enable quick directional changes and compaction in tight spaces. With simple controls, high accuracy, and being among the fastest in its class, the machine packs a surprising punch.



Robust frame protects key components and enables secure transport

Wear-resistant and self-cleaning base plate for added peace of mind

Low vibration levels for more comfort and no additional paperwork on the job site

Highly maneuverable thanks to the hydrostatic steering, which enables smooth changes in direction and on-the-spot compaction

Durable twin-shaft exciter extends service intervals and prolongs the plate's life



SPECIFICATIONS					
	RP22.40	RP22.40D	RP25.40D / RP25.50D	RP30.50 / RP30.60	RP30.50D / RP30.60D
DIMENSIONS & WEIGHTS					
Max. machine weight (including options)	109 kg	130 kg	146 kg	213 kg	243 kg
Base plate length	254 mm		330 mm		
Machine length	600 mm			700 mm	
Machine height	625 mm	725 mm	755 mm	765 mm	785 mm
Handle height (transport)	1 180 mm				
Machine width	400 mm		380 / 500 mm	500 / 600 mm	
ENGINE					
Engine	Honda GX 160	Hatz 1B20	Hatz 1B20	Honda GX 270	Hatz 1 B 30
Fuel	Petrol	Diesel		Petrol	Diesel
Engine output at RPM	3.6 kW at 3 600	3.1 kW at 3 000		6.0 kW at 3 100	4.5 kW at 2 900
Fuel consumption	1.4 l/h	0.9 l/h		2.1 l/h	1.3 l/h
COMPACTION FORCES					
Max. vibration frequency	98 Hz		95 Hz	90 Hz	
Max. centrifugal force	23 kN		25 kN	32 kN	
Surface capacity	528 m ² /h	504 m ² /h	479 m ² /h	780 m ² /h	870 m ² /h
Spec. surface pressure	22.6 N/cm ²		19.9 N/cm ²	19.4 N/cm ²	
MISCELLANEOUS					
Hand-arm vibrations	< 2.5 m/sec ²				
Speed	22 m/min	21 m/min		26 m/min	29 m/min
Fuel tank capacity	3.1 l	3 l		5.3 l	5 l
Gradeability	35%				
Max. incline to all sides	20°	30°			
Water tank	-	7.6 l	9.4 l	-	-
Amplitude	0.9 mm		1.5 mm	1.2 mm	

Specifications can change without notice. Specifications for your Bobcat equipment may vary based on variations in design and working conditions.

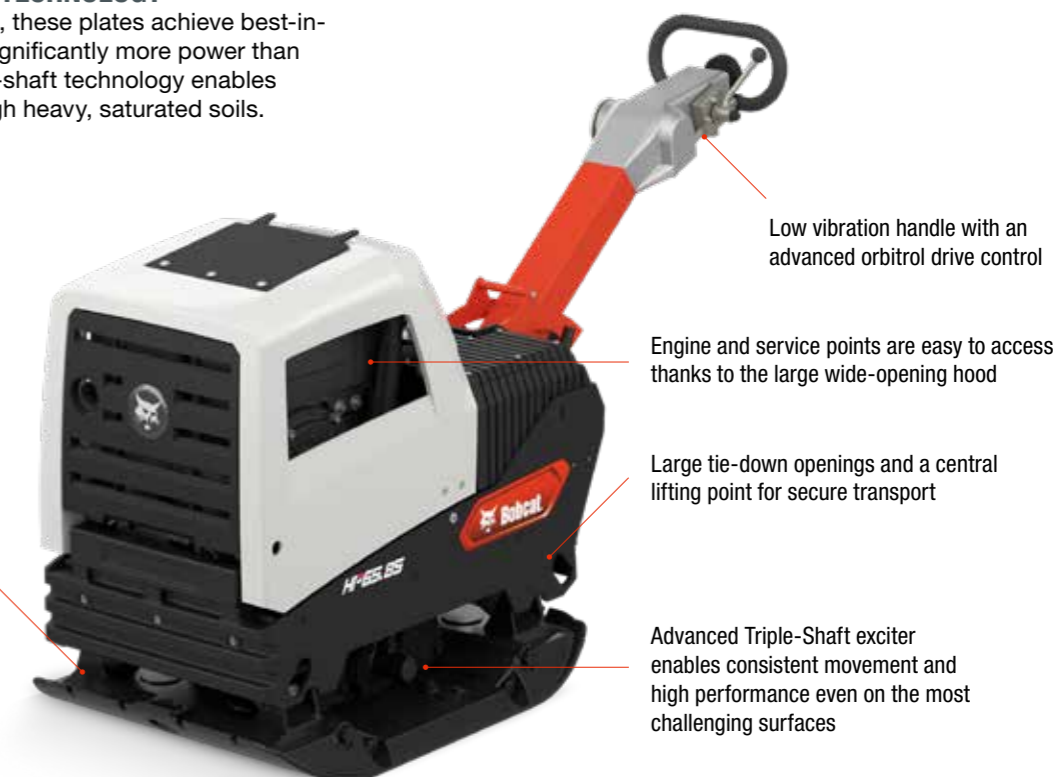
SPECIFICATIONS				
	RP40.60	RP40.60D	RP49.20D	RP59.20D
DIMENSIONS & WEIGHTS				
Max. machine weight (including options)	263 kg	284 kg	424 kg	440 kg
Base plate length	410 mm		450 mm	
Machine length	860 mm			898 mm
Machine height	780 mm	810 mm	817 mm	850 mm
Handle height (transport)	1 180 mm		1 285 mm	
Machine width	600 mm		450/600/750 mm	
ENGINE				
Engine	Honda GX 270	Hatz 1B30	Hatz 1B40	Hatz 1B40
Fuel	Petrol		Diesel	
Engine output at RPM	6.0 kW at 3 100	6.0 kW at 2 900	6.6 kW at 2 900	
Fuel consumption	2.1 l/h	1.3 l/h	1.6 l/h	
COMPACTION FORCES				
Max. vibration frequency	65 Hz			
Max. centrifugal force	42 kN		49 kN	59 kN
Surface capacity	1 044 m ² /h	900 m ² /h	1 575 m ² /h	
Spec. surface pressure	17.1 N/cm ²		24.2 N/cm ²	42.3 N/cm ²
MISCELLANEOUS				
Hand-arm vibrations	< 2.5 m/sec ²			
Speed	29 m/min	25 m/min	35 m/min	
Fuel tank capacity	5.3 l	5 l		
Gradeability	35%			30%
Max. incline to all sides	20°	30°	25°	
Water tank	-			
Amplitude	2.5 mm		2.4 mm	2.1 mm

Specifications can change without notice. Specifications for your Bobcat equipment may vary based on variations in design and working conditions.

HYDROSTATIC PLATES

▶ ADVANCED COMPACTION TECHNOLOGY

Built with a fully hydraulic drive, these plates achieve best-in-class control while providing significantly more power than mechanical alternatives. Triple-shaft technology enables smooth movement even through heavy, saturated soils.



SPECIFICATIONS				
	HP50.75	HP55.75	HP60.85	HP65.85
WEIGHT & DIMENSIONS		TRIPLE SHAFT		TRIPLE SHAFT
Machine weight	350 kg	362 kg	464 kg	471 kg
Base plate length	450 mm	450 mm	470 mm	470 mm
Machine length	900 mm	900 mm	930 mm	930 mm
Machine length with handle	1 600 mm	1 600 mm	1 840 mm	1 840 mm
Machine height	820 mm	820 mm	905 mm	905 mm
Handle height (transport)	1 500 mm	1 500 mm	1 500 mm	1 500 mm
Machine width	450/600/750 mm	450/600/750 mm	550/700/850 mm	550/700/850 mm
ENGINE				
Engine	Hatz Supra 1D50S	Hatz Supra 1D50S	Hatz Supra 1D81S	Hatz 1D81S
Fuel	Diesel	Diesel	Diesel	Diesel
Engine output at RPM	7 kW at 3 200	7 kW at 3 200	10.1 kW at 3 000	10.1 kW at 3 000
Fuel consumption	1.7 l/h	1.7 l/h	2.5 l/h	2.5 l/h
COMPACTION FORCES				
Max. vibration frequency	70 Hz	70 Hz	69 Hz	55 Hz
Max. centrifugal force	50 kN	55 kN	60 kN	65 kN
Surface capacity	1 125 m ² /h	1 215 m ² /h	1 428 m ² /h	1 632 m ² /h
Max. surface pressure	24.7 N/cm ²	27.2 N/cm ²	23.2 N/cm ²	25.1 N/cm ²
MISCELLANEOUS				
Speed	25 m/min	27 m/min	28 m/min	32 m/min
Fuel tank capacity	5 l	5 l	7 l	7 l
Gradeability	36%	36%	36%	36%
Max. incline to all sides	30°	30°	30°	30°
Amplitude	1.7 mm	2.3 mm	1.9 mm	3.9 mm

Specifications can change without notice. Specifications for your Bobcat equipment may vary based on variations in design and working conditions.

WALK-BEHIND ROLLER



Hydraulic cooling for maximum productivity in all weather conditions

Generous 60 liter water tank capacity for maximum uptime

Suspended guide handle ensures very low vibration levels

► TWO IN ONE

Adjustable centrifugal weights allow quick switching from working on asphalt to loose substrate. Designed to excel in both applications, this fully hydraulic machine is the most versatile solution for your job site.

SPECIFICATIONS		
	WR65	
WEIGHT & DIMENSIONS	HATZ	YANMAR
Machine weight	719 kg	N/A
Machine weight with e-start	738 kg	712 kg
Working width	650 mm	
Machine length	2 288 mm	
Wheelbase	500 mm	
Drum diameter	400 mm	
Machine height	1 110 mm	
Transport height	1 835 mm	
Machine width	720 mm	
ENGINE		
Engine	Hatz 1D42S	Yanmar L100N
Fuel	Diesel	
Engine output	6.1 kW	
Fuel consumption	1.7 l/h	1.2 l/h
COMPACTION FORCES		
Max. vibration frequency	60 Hz	
Max. centrifugal force	11/21 kN	
Linear pressure	5.7 kg/cm	5.5 kg/cm
Amplitude	0.3/0.5 mm	
Max. compaction depth (soil)	20/15 cm	
Max. compaction depth (sand)	30/25 cm	
MISCELLANEOUS		
Speed (forward)	4 km/h	
Speed (backward)	2.5 km/h	
Gradeability w./w.o. vibration	25% / 44%	
Fuel tank capacity	5 l	4.7 l
Hydraulic oil capacity	20 l	
Water tank capacity	60 l	

Specifications can change without notice. Specifications for your Bobcat equipment may vary based on variations in design and working conditions.

Dual amplitude vibratory system mounted between the drums makes the machine extremely versatile, so you get the most out of your investment



TRENCH ROLLERS



Automated Compaction Measurement System for real-time feedback on soil stiffness

Consistent output and smooth start and stop, thanks to the hydrostatic drive and hydromechanical brakes

TR75 is available with optional drum extensions, making the machine extremely versatile

► FULL-ON COMPACTION

Operated using solar-powered remote control for maximum comfort and visibility. Both machines are robust, but they are also surprisingly agile: while the TR75 features an articulated joint and oscillating drums, the TR85S utilizes the skid-steer concept and allows 360° on-spot-turning. The articulated model TR75 features dual amplitude settings with the centrifugal weights in the drum, while the skid TR85S has a central vibration system and a single amplitude, providing one of the best compaction outputs on the market.

SPECIFICATIONS		
	TR75	TR85S
WEIGHT & DIMENSIONS		
Machine weight (with drum extension)	1 340 (1 450) kg	1 305 (1 395) kg
Machine length	1 980 mm	1 520 mm
Wheelbase	1 000 mm	850 mm
Machine height	1 317 mm	1 230 mm
Machine height (hood)	1 282 mm	–
Machine width	601 mm	–
Drum width	640 / 850 mm	630 / 850 mm
Machine length	2 227 mm	1 780 mm
Drum diameter	525 mm	500 mm
ENGINE		
Engine	Yanmar 3TNV80F	Hatz 2 G 40
Engine output	14.6 kW	13.2 kW
Maximum torque	68.4/1 800 Nm/RPM	-/2 550 Nm/RPM
No. of cylinders	3 / water cooling	2 / air cooling
DRIVING CHARACTERISTICS		
Drive system	Hydrostatic	
Oscillation angle	± 7°	–
Working speed	1.4 km/h	1.1 km/h
Travel speed	2.8 km/h	2.5 km/h
Gradeability	30%	
Turning radius inner	1 540/1 440 mm	0 mm (on spot)
Turning radius outer	2 190/2 290 mm	–
COMPACTION FORCES		
Frequency	40 Hz	30 Hz
Amplitude	1.1 / 0.6 mm	2.4 mm
Centrifugal force	75 / 36 kN	86 kN
MISCELLANEOUS		
Fuel tank capacity	28 l	24 l
Hydraulic oil capacity	16 l	53 l

Specifications can change without notice. Specifications for your Bobcat equipment may vary based on variations in design and working conditions.





150 ATTACHMENT FAMILIES 97 MACHINES 1 TOUGH ANIMAL



**LIGHT COMPACTION
EQUIPMENT**



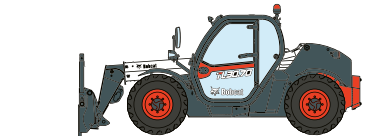
**MINI TRACK
LOADERS**



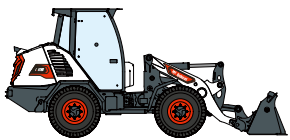
**SKID STEER
LOADERS**



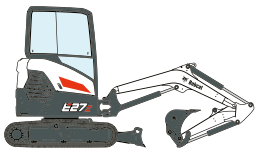
**COMPACT TRACK
LOADERS**



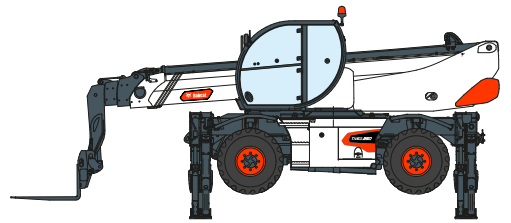
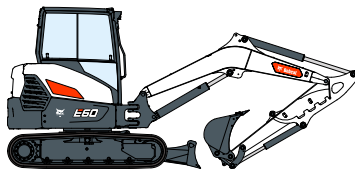
TELEHANDLERS



COMPACT WHEEL LOADERS



COMPACT EXCAVATORS



ROTARY TELESCOPIC HANDLERS



Bobcat®

Bobcat is a Doosan Company.

Doosan is a global leader in construction equipment, power & water solutions, engines, and engineering proudly serving customers and communities for more than a century. | Bobcat and the Bobcat logo are registered trademarks of Bobcat Company in the United States and various other countries.
©2021 Bobcat Company. All Rights Reserved.

*Financing options may vary by country and dealer. Always ask your dealer about currently available financing options. Terms and conditions may apply.



GET **A QUOTE**

Simply click **the button** or scan **the QR code** below to access our quote request form.

We will contact you as soon as possible.
Thank you!



REQUEST QUOTE >